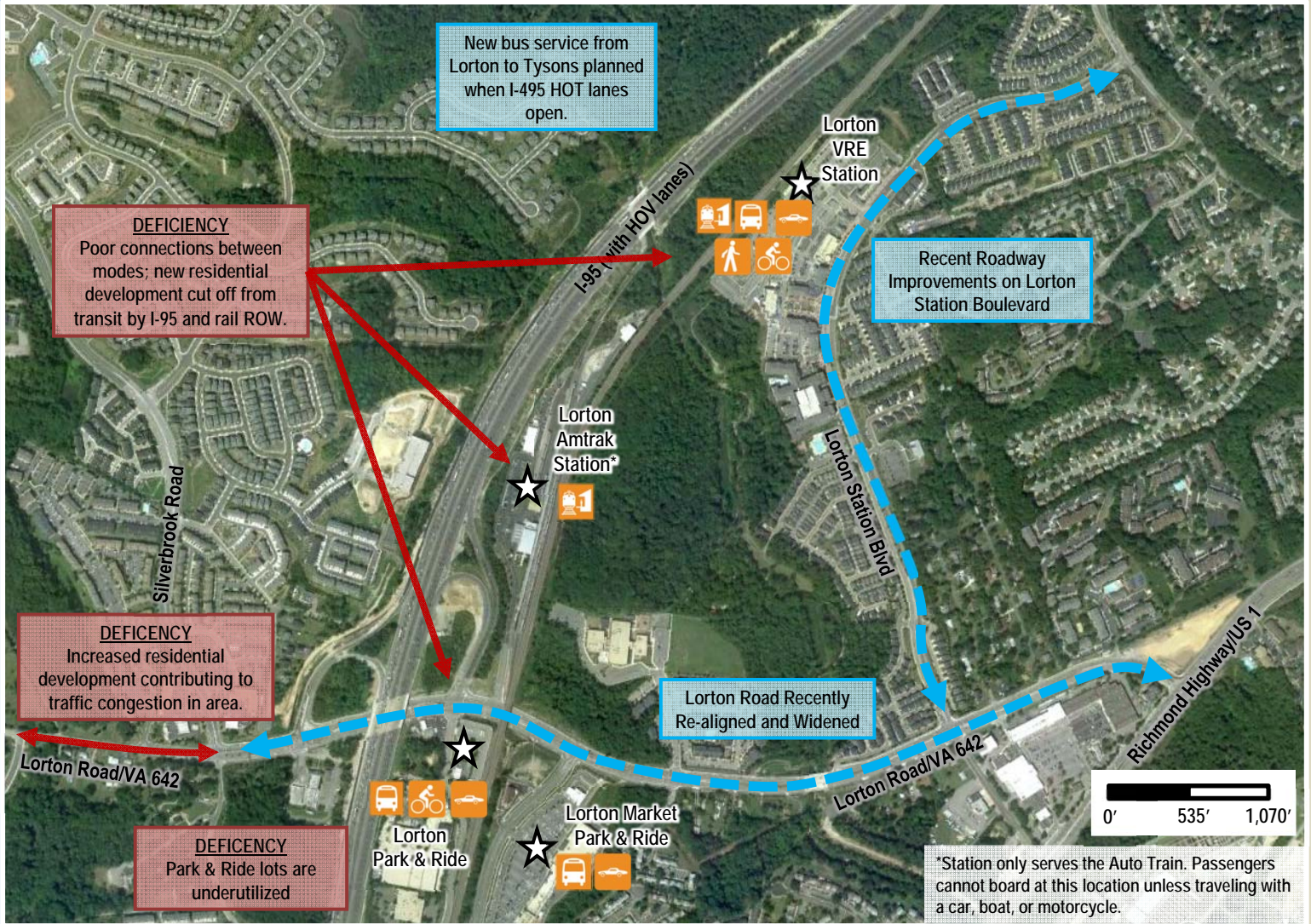
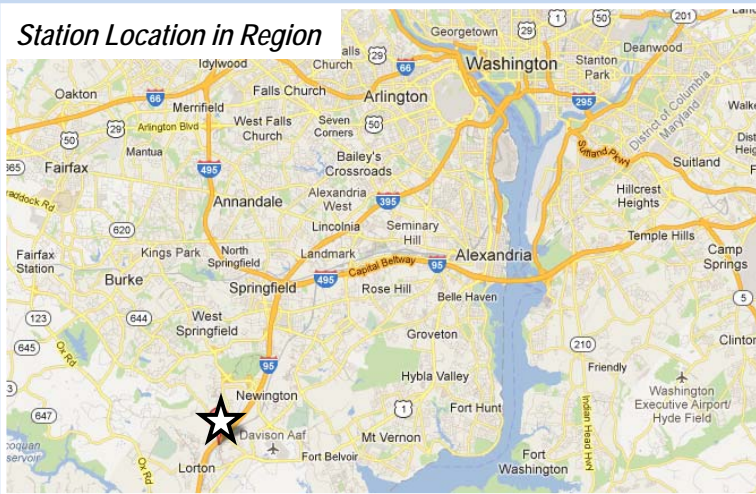


### INTERMODAL CENTER DESCRIPTION

The Lorton Rail Stations Area is an activity center with connections to Amtrak, VRE, I-95, and Fairfax County Connector bus service in addition to park-and-ride options.



#### Station Location in Region



#### Connections to Other Modes

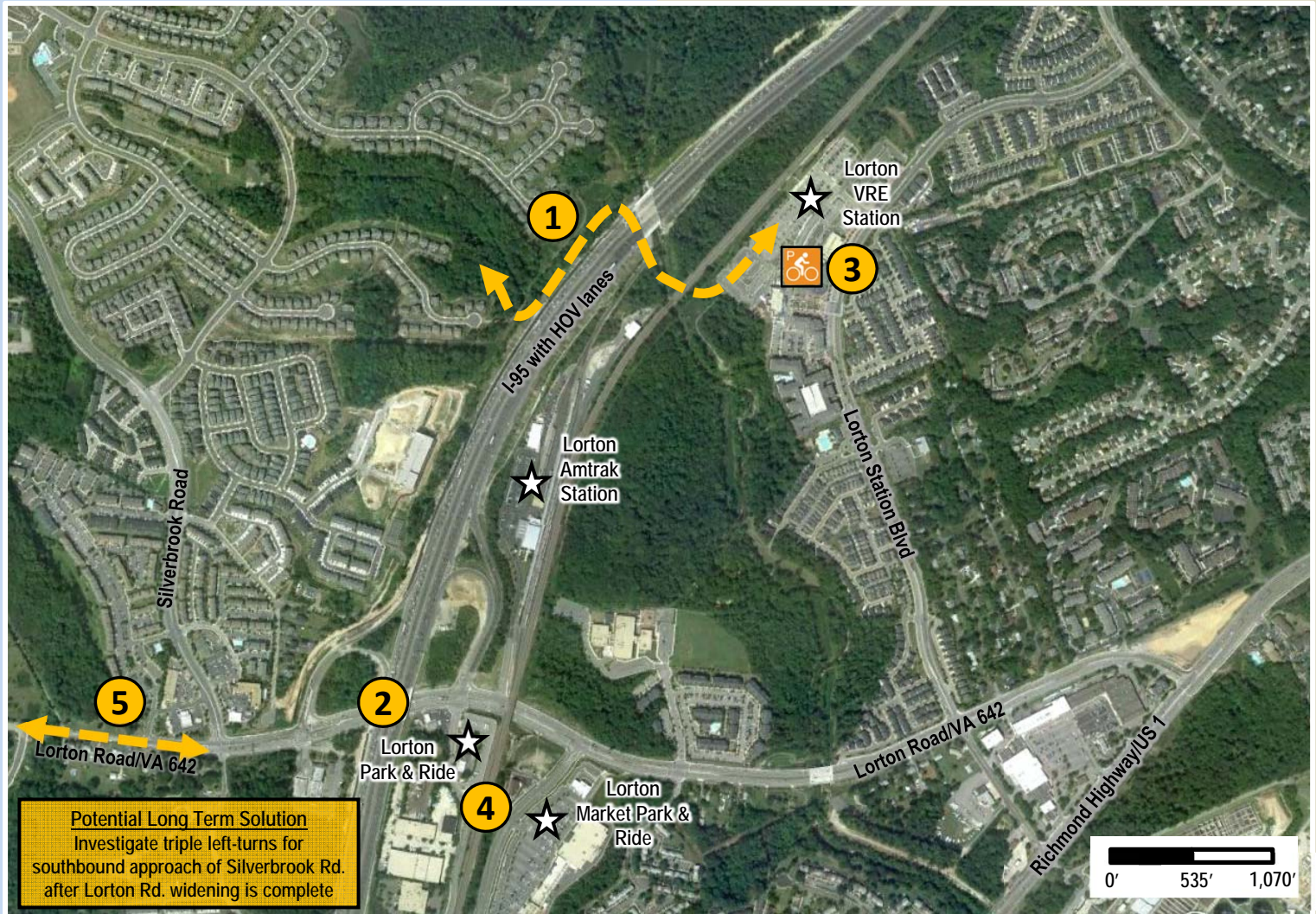
##### PUBLIC TRANSPORTATION

- Lorton VRE commuter rail (469 parking spaces)
- Lorton Market Park and Ride (66 spaces)
- Lorton Park and Ride (170 spaces)
- Fairfax Connector Routes 171, 305, and 371 to Franconia-Springfield and Huntington Metro Rail Services

##### BICYCLE AND PEDESTRIAN

- Bicycle lanes on Lorton Road from VA 611 to Richmond Highway
- Bicycle parking at Lorton VRE Station
- Shared-use path on south side of Lorton Road

**FUTURE SITE IMPROVEMENTS**



**Potential Long Term Solution**  
Investigate triple left-turns for southbound approach of Silverbrook Rd. after Lorton Rd. widening is complete

<b>Short-Term Recommendations and Estimated Project Costs</b>			
	<b><u>Recommended Action (Source)</u></b>	<b><u>Benefit</u></b>	<b><u>Cost</u></b>
1	Continue greenway in Laurel Hill Redevelopment Area (DC Corrections Site) to connect with the Lorton VRE Station ( <i>Fairfax County Comprehensive Plan Amendment 2011</i> )	Allows better, more direct pedestrian access from new residential communities to transit options	\$8.58 million
2	Provide enhanced lighting under I-95 overpass where bicycle volume is highest ( <i>Fairfax County Comprehensive Plan 2011</i> )	Maintains quality and safety of riders	\$50,000
3	Install bicycle lockers at VRE station ( <i>MWCOG 2010 Bicycle Pedestrian Plan</i> )	Makes bike-to-train commute trips easier and more attractive	\$20,000
4	Find ways to increase Park-and-Ride usage, perhaps through increased way-finding signage ( <i>VDOT</i> )	Increase usage of park and ride.	\$20,000
5	Widen Lorton Road west of Silverbrook Road to six-lane facility ( <i>Fairfax County Comprehensive Plan Amendment 2011</i> )	Greatly improves capacity of Lorton Road	Underway

Note: Costs shown are planning level estimates, not design level estimates, as they do not include associated constructability, engineering, and inspection (CDI) and contingency costs, among others.